

# 5 DAYS TO ACTIONS ON OBJECTIVES

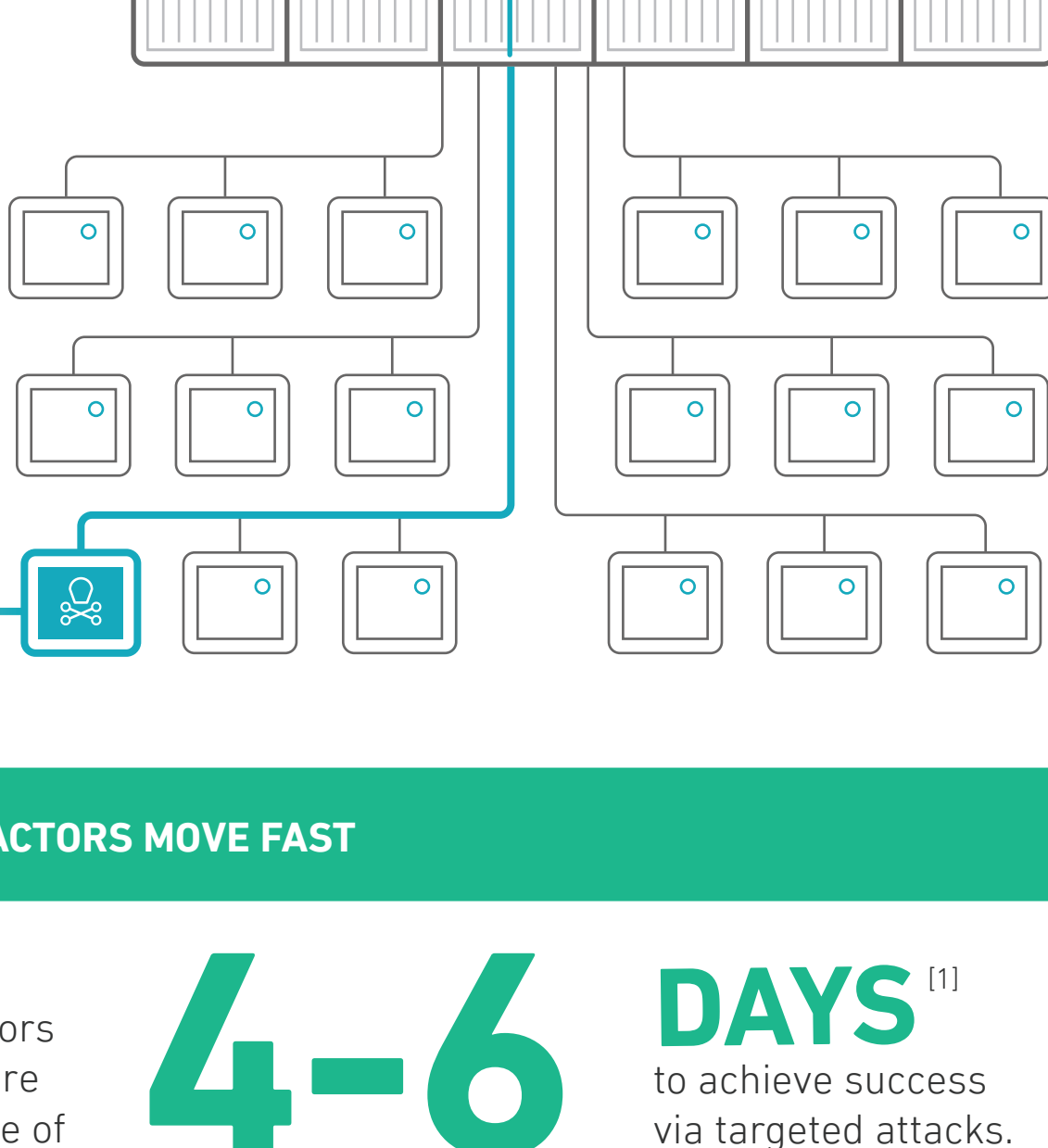
DWELL TIME AS A CRITICAL SECURITY SUCCESS METRIC

## WHAT IS DWELL TIME?

The time from the point a threat successfully enters your environment to when the threat is completely remediated.

## WHY IT MATTERS

Dwell time is a leading metric in measuring the proficiency of a given security strategy and its related processes, policies and controls. For CISOs and CIOs, tying this number to business impact is critical.



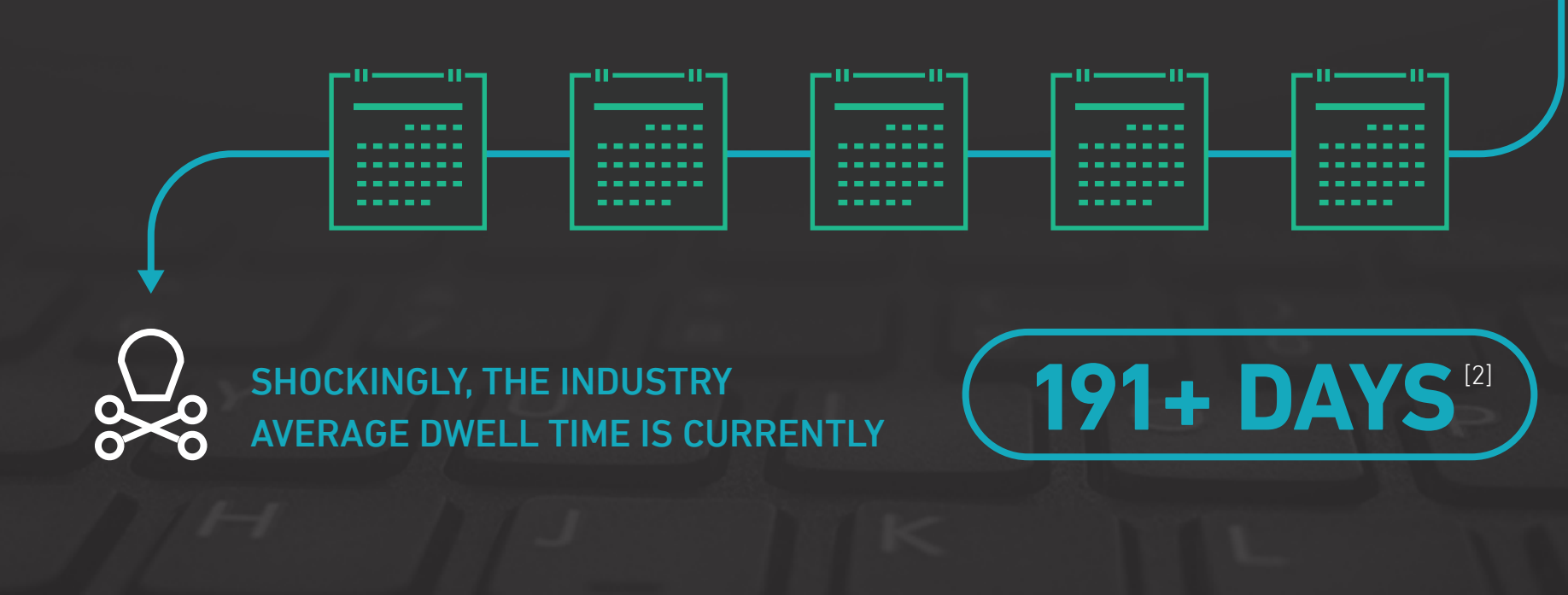
## THE HIDDEN DANGER

### THREAT ACTORS MOVE FAST

Mid-level threat actors only require an average of

**4-6**

**DAYS**<sup>[1]</sup> to achieve success via targeted attacks.

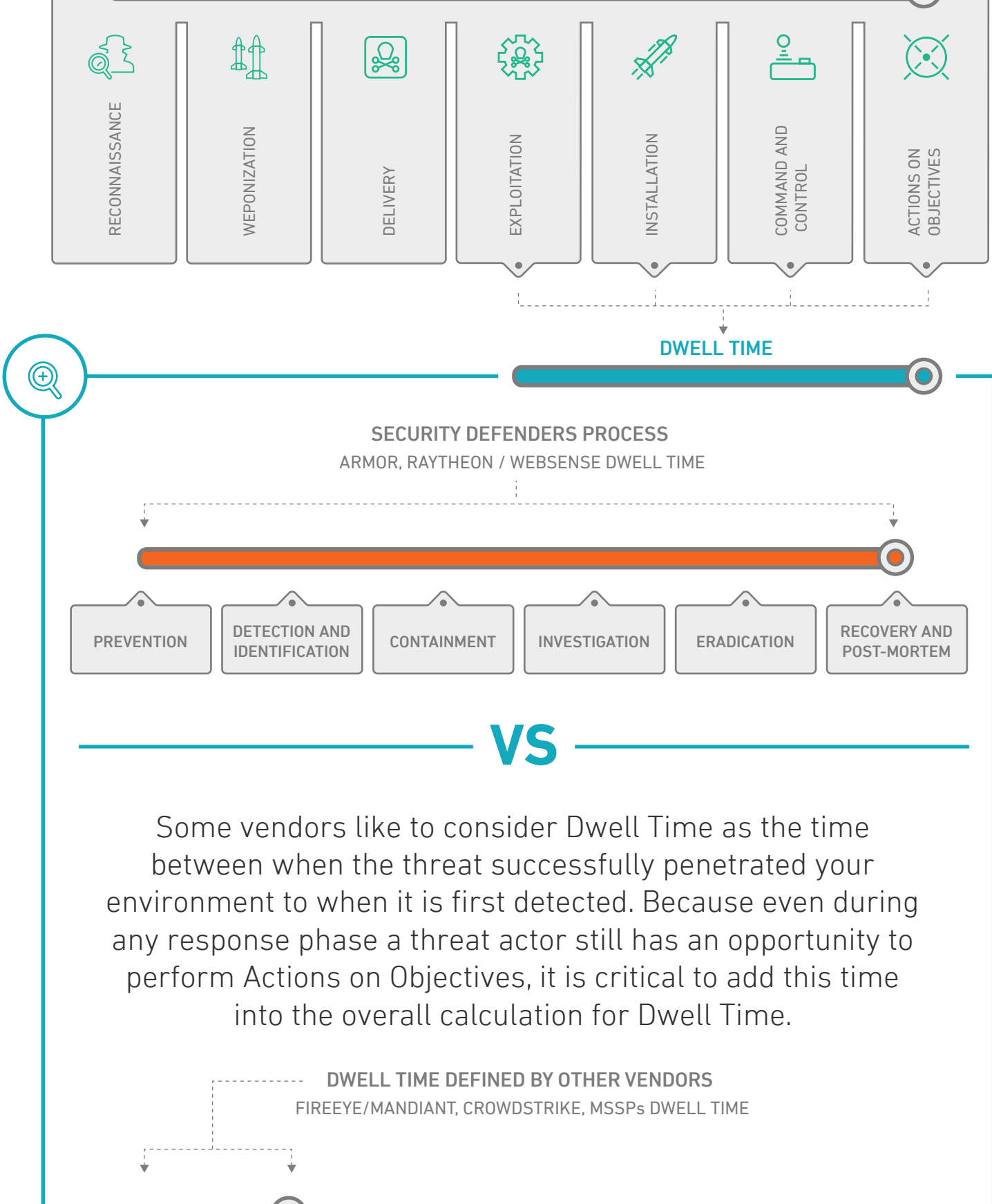


SHOCKINGLY, THE INDUSTRY AVERAGE DWELL TIME IS CURRENTLY

**191+ DAYS**<sup>[2]</sup>

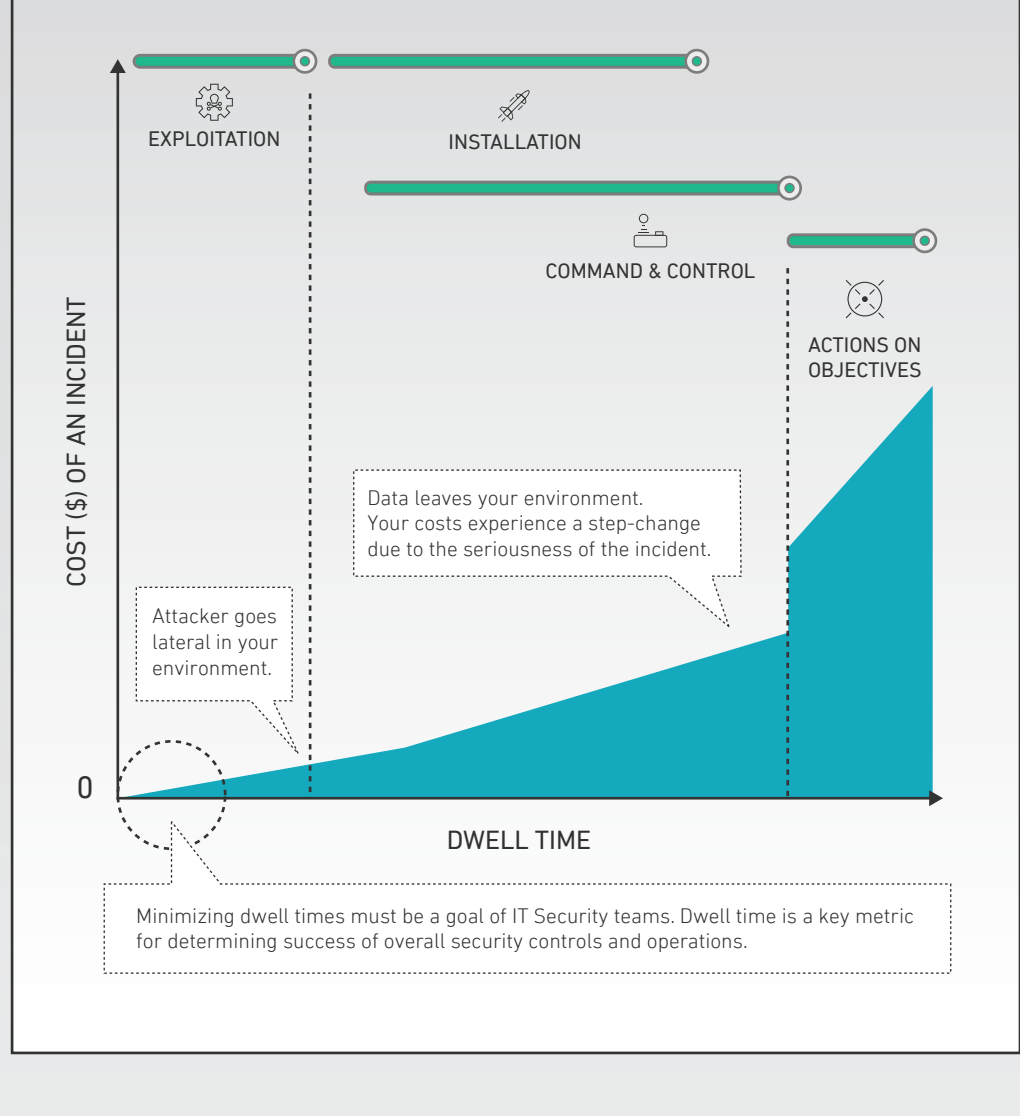
## DEFINING DWELL TIME

Aligning Dwell Time to the Cyber Kill Chain® means that the good guys are attuned to opportunities to counter how the bad guys operate. The Kill Chain represents the lifecycle of a threat (the process the threat actor conducts) from beginning to end. In this model, phases 4 through 7 represent the opportunity security teams have to disrupt the threat actor's efforts.

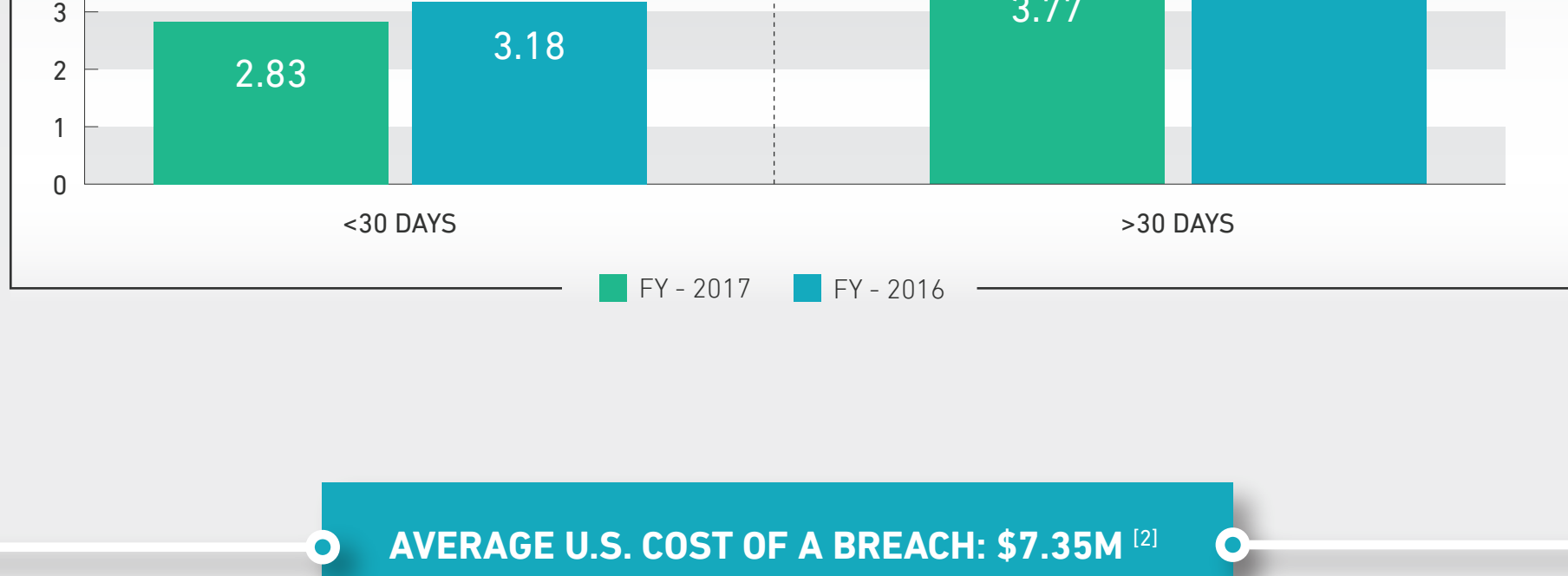


## CLEANUP IS COSTLY, TIME-CONSUMING

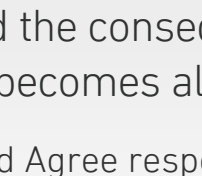
The longer a threat actor is able to operate unfettered in your environment, the more likely the actor is able to achieve Actions on Objectives, the final stage of the Cyber Kill Chain. For businesses, shorter dwell times mean reduced risk of a data breach, a malware outbreak, or their machines getting ensnared in a botnet or held hostage by ransomware. In turn, this also means lower chances of downtime, regulatory compliance penalties and hefty lawsuits and costs stemming from a cyber incident.



## RELATIONSHIPS BETWEEN MEAN TIME TO CONTAIN AND AVERAGE COST<sup>[3]</sup>

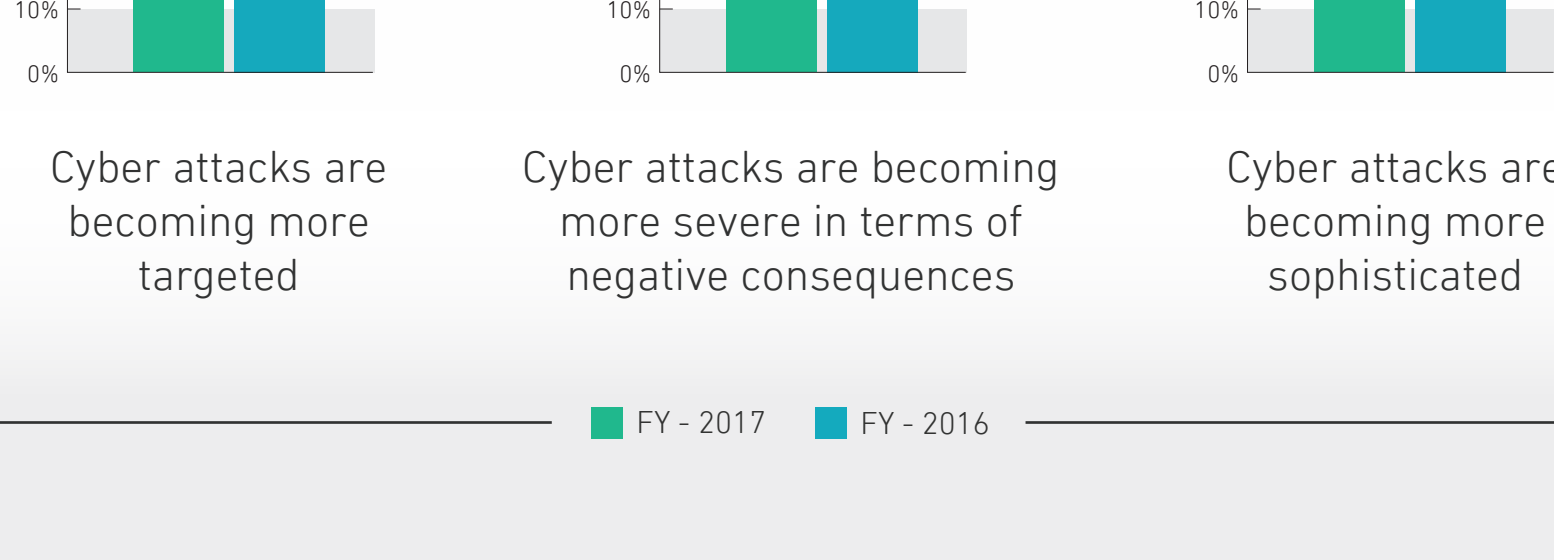


## AVERAGE U.S. COST OF A BREACH: \$7.35M<sup>[2]</sup>

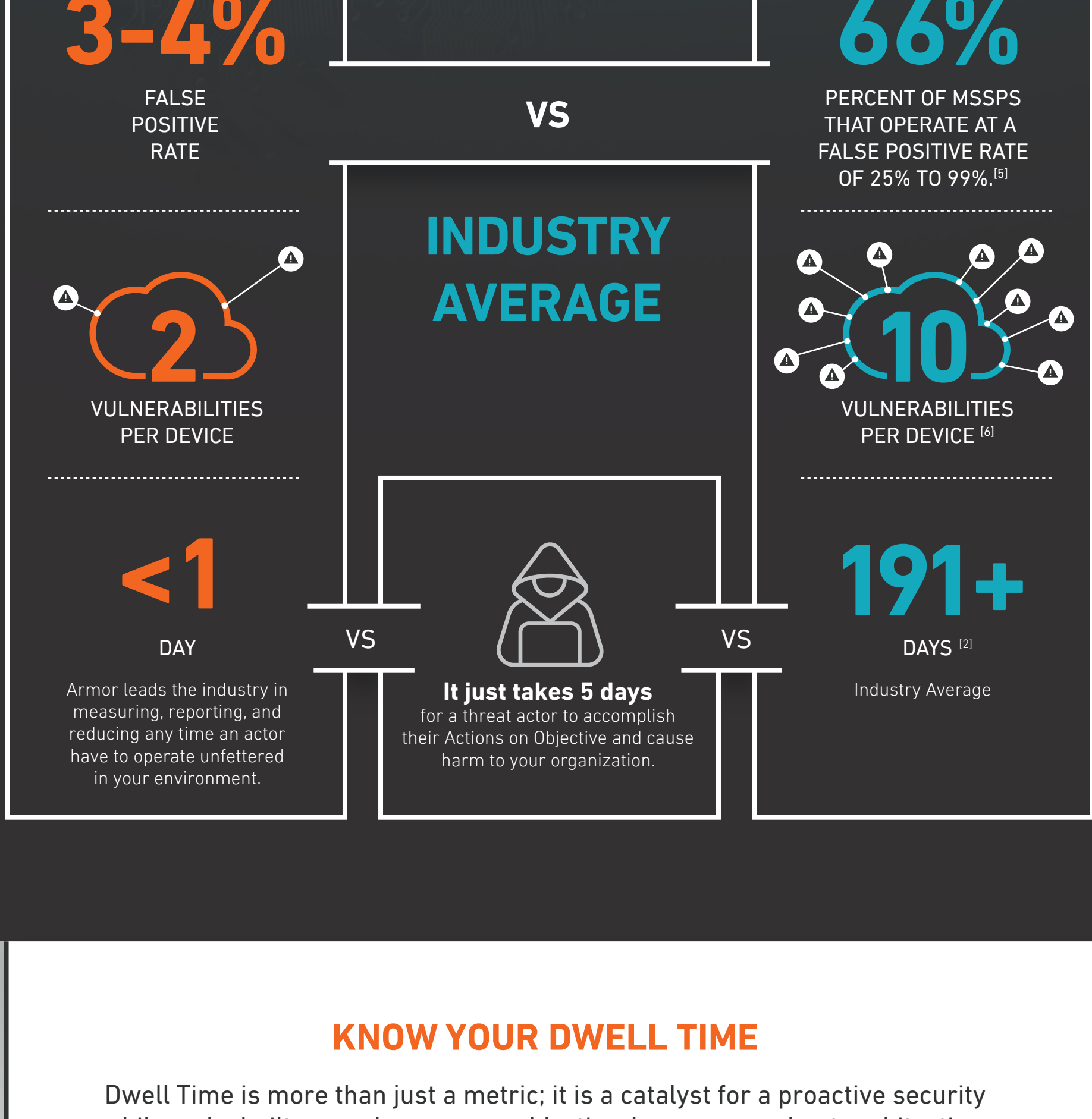


When the threat appears to be getting more targeted, more sophisticated and the consequences more severe, reducing Dwell Time becomes all the more critical<sup>[4]</sup>:

Strongly Agree and Agree responses combined



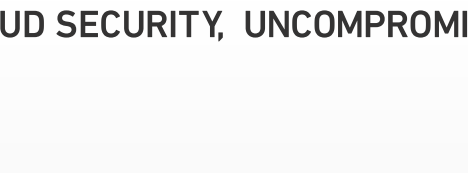
## THE INDUSTRY AVERAGE IS NO MATCH FOR ARMOR



## KNOW YOUR DWELL TIME

Dwell Time is more than just a metric; it is a catalyst for a proactive security philosophy built around a common objective. Learn more about architecting your security operations with Dwell Time in mind.

Get the eBook



CLOUD SECURITY, UNCOMPROMISED.™